

# Concrete Batching Plant



# Concrete Batching Plant – Key Information

## Timeframe

- March / April Compound set up, civils work.
- May – July Assemble batching plant
- August Concrete ready

## Operational Levels

- 30 staff and welfare for 50 people
- 4 silos
- Eiffage Infrastructure Mobile Equipment

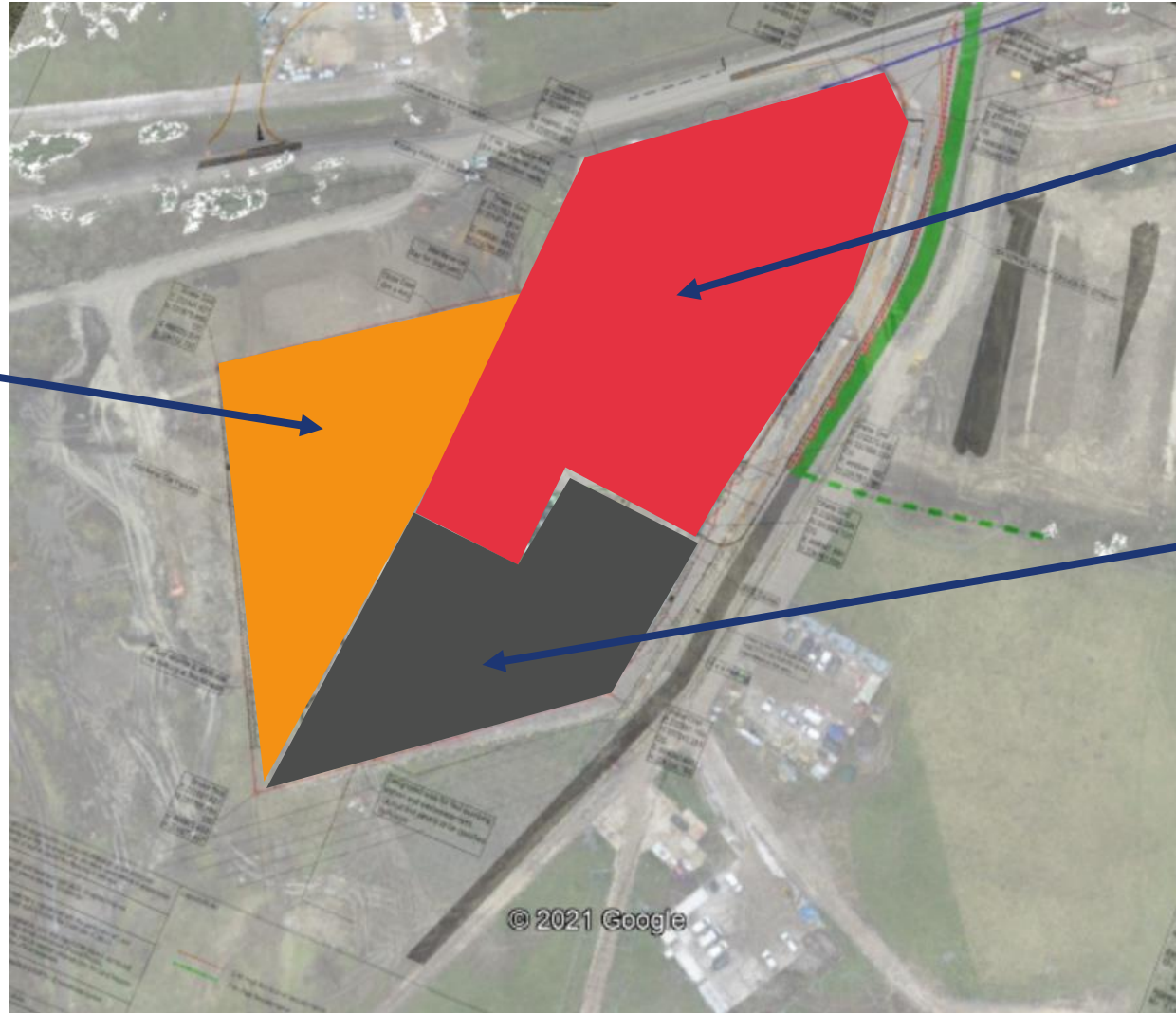


# Sectioned site for priorities



# Sectioned site for priorities

Carpark  
Low priority



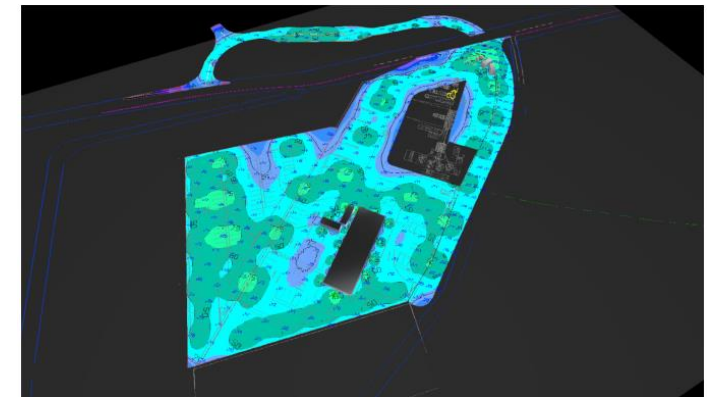
**Batching Plant**  
Priority work. Land available  
March

Land available April

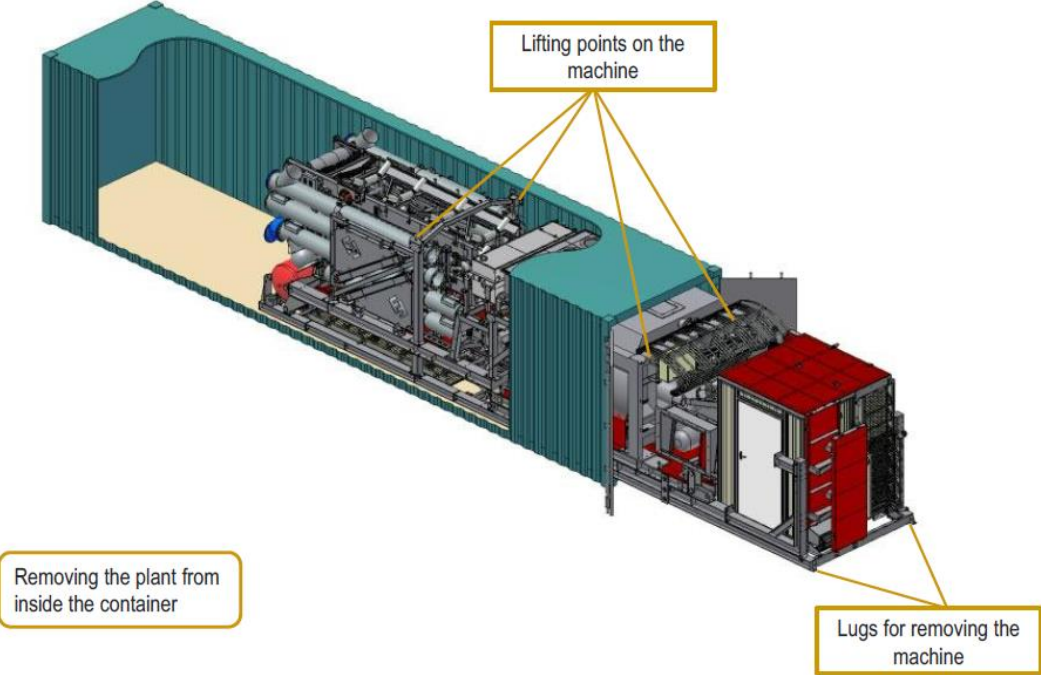


# Community Aspects

- **Visual** Silo colours
- **Noise** White noise to permanent plant  
Layout  
Monitoring
- **Dust** Sealed system
- **Lighting** Design  
Downward facing  
Low level  
PIR's



# Containerised modules pulled out on skids to be lifted to final position





Lifting operation for the machine



# Silo assembly sequence

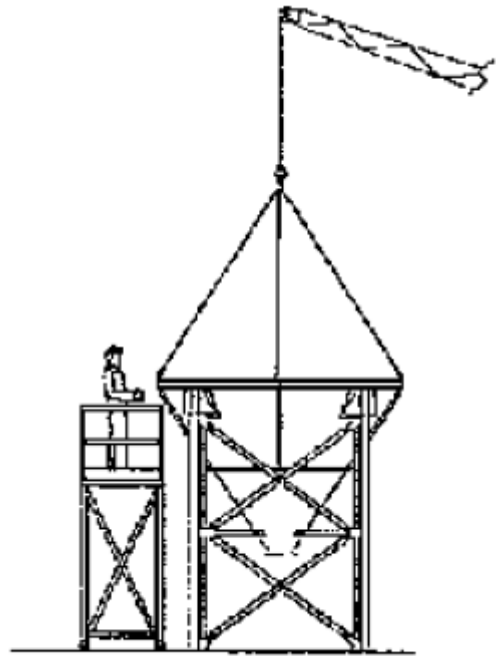
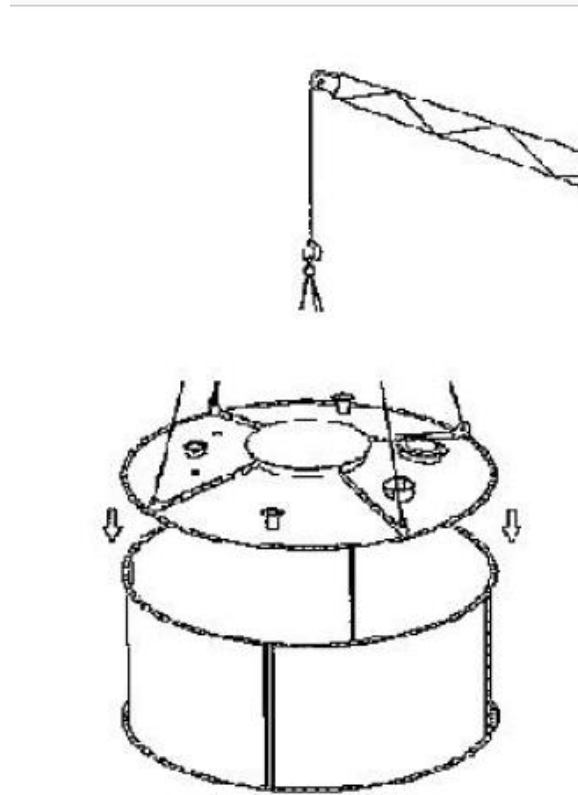
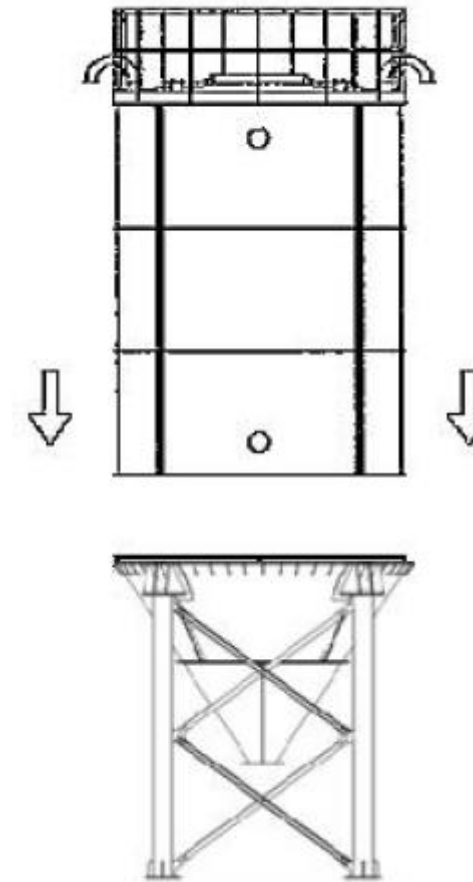


Fig. 7b

Steel gantry support and cone constructed at ground level and lifted to position. Constructed horizontal to be lifted by 2 cranes top-and-tail



Silo top cone assembled first and lifted by crane. Lower rings bolted to top section in order and keep lifting and fitting a ring. 7 rings in total



Full 7-ring silo top lifted to top of steel gantry & cone and fitted to position



# Office / welfare setup

- 2-storey office/ welfare block
- Office space for 30 people
- Changing / welfare for 50 people
- Additional single office for batching plant operators
- Additional materials testing lab on site

